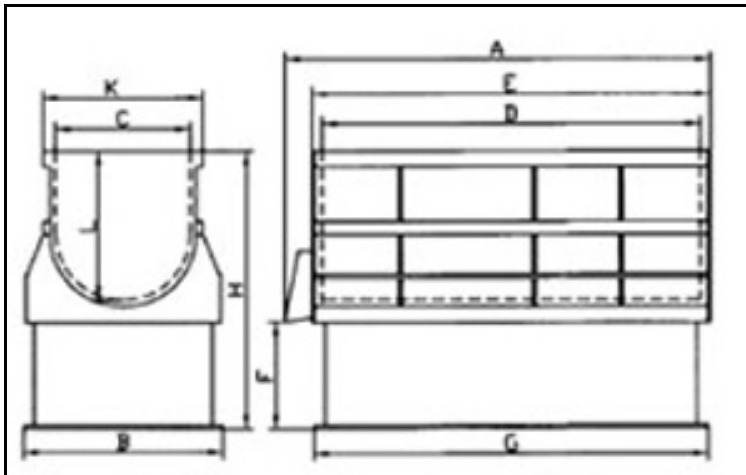


# ROYSON ENGINEERING COMPANY

CTT-6 VIBRATORY FINISHER

BULLETIN #395



## FEATURES:

- 6 CU/FT
- OPTIONAL PNEUMATIC SOUND HOOD
- 2 KW DIRECT DRIVE 240/460 V
- VARIABLE SPEED
- URETHANE LINER
- 19.6"W 22"D 49"L WORK CHAMBER
- MEDIA UNLOAD DOOR

## DIMENSIONS

copyrightRoyson2010

CTT-6	A	B	C	D	E	F	G	H	L	K	WEIGHT
DIM IN.	55	29	19.6	49	52	17	52	41	22	24	1650 LBS

130 N. PENN ST. HATBORO, PA. 19040 PH #215-675-2800 FAX# 215-675-3035