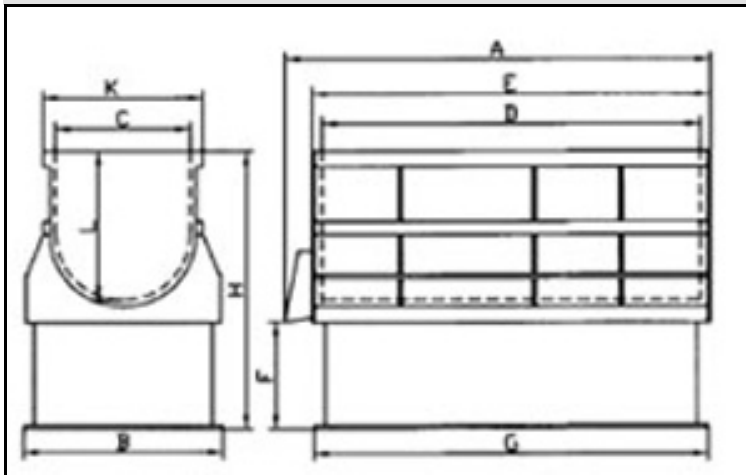


# ROYSON ENGINEERING COMPANY

CTT-15 VIBRATORY FINISHER

BULLETIN #397



## FEATURES:

- 12 CU/FT
- OPTIONAL PNEUMATIC SOUND HOOD
- 5.5 KW DIRECT DRIVE MOTOR
- VARIABLE SPEED
- URETHANE LINER
- 24"W 24"D 60"L WORK CHAMBER
- MEDIA UNLOAD DOOR

## DIMENSIONS

copyrightRoyson2010

CTT-15	A	B	C	D	E	F	G	H	L	K	WEIGHT
DIM IN.	66	36	24	60	65.5	20	64	47	24	29.5	3204 LBS

130 N. PENN ST. HATBORO, PA. 19040 PH #215-675-2800 FAX# 215-675-3035